

PRTG NETWORK MONITOR

Installed in Seconds.

Configured in Minutes.

Masters Your Network for Years to Come.

PRTG Network Monitor is ...

NETWORK MONITORING?

Network monitoring continuously collects current status information from your IT network to determine the availability and utilization of devices and to measure bandwidth usage. The IT administrator is informed immediately via email, text message, or other means if delays, malfunctions, or even failures are recorded. Historically collected data gives a long-term overview of the overall health and usage of the network.

Systematic network monitoring helps prevent outages, optimize networks, and improve services: Save time and money!



The 'sunburst view' shows the status of the whole network on a single screen.

... proven in more than
150,000 installations worldwide.
Easy, failsafe, and complete
control over your network.

**... ONE SOFTWARE SOLUTION
TO MONITOR YOUR ENTIRE
NETWORK, INCLUDING
DEVICES, APPLICATIONS,
TRAFFIC, AND AVAILABILITY.**

PRTG Network Monitor monitors Windows, Linux, Unix, and Mac OS systems. The solution supports SNMP, WMI, Flow monitoring, as well as packet sniffing, and monitoring of IPv6 devices.

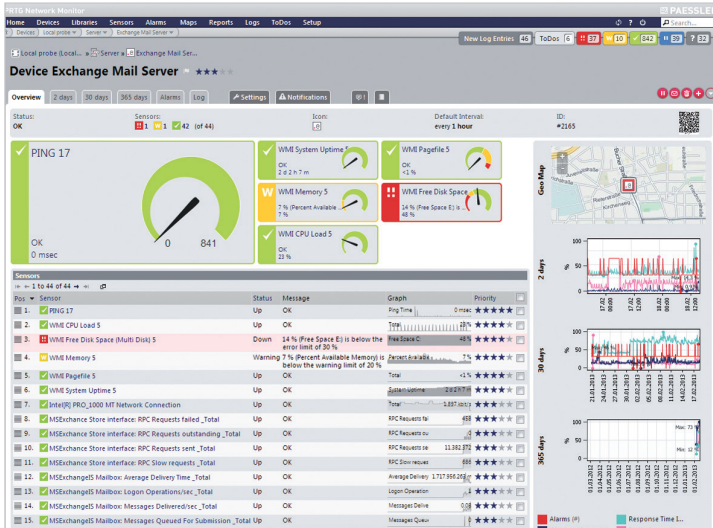
It offers more than 190 pre-built sensors specifically designed for QoS monitoring, website monitoring, email monitoring, application monitoring, database monitoring, monitoring of virtual environments, and much more.

**... A SCALABLE ENTERPRISE
MONITORING SOLUTION.**

The PRTG Network Monitor Enterprise Console supports viewing data of multiple PRTG installations at a glance: It displays aggregate information for all PRTG installations in one single program, even in huge setup scenarios.

This is ideal for enterprises that need to scale a large number of sensors.

EASY TO USE WEB INTERFACE



Fast and powerful, optimized for easy and intuitive use. This picture shows the device overview page including a graphic display of the most important sensors.

Paul Hebinger, UBR Technology Services

PRTG Network Monitor is ...

... A HIGHLY AVAILABLE MONITORING SOLUTION.

PRTG Network Monitor comes with a failover cluster in every license (up to five cluster nodes for a Corporate license), which makes sure monitoring will not be interrupted in case of a server failure or while updates are installed.

... A COMPREHENSIVE NETWORK MONITORING SOLUTION WITH CLEAR AND FAIR LICENSING THAT FITS YOUR BUDGET.

PRTG Network Monitor offers comprehensive monitoring functionality and scales up to larger networks of some thousand devices and even more for the price of an entry level monitoring solution. It includes the entire monitoring functionality in every license.

No add-ons are required – no extra costs, no extra configuration and no extra maintenance efforts.

... AN EASY TO USE MONITORING SOLUTION FOR YOUR NETWORKS.

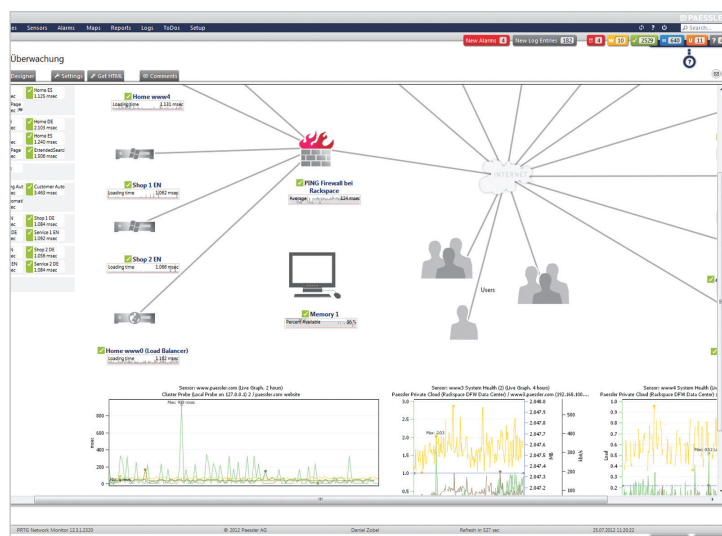
PRTG Network Monitor is installed and set-up within minutes and can be updated with new versions in only three clicks thanks to the automated software update. It comes with its own database, an integrated web server, a configuration 'Guru', and an automatic network discovery.

PRTG is consequently optimized for easy usage.

... ENABLES YOU TO MONITOR DIFFERENT SITES FROM ONE CENTRAL INSTALLATION.

PRTG Network Monitor comes with 'remote probes' which can be installed on distributed networks and then send the monitoring data SSL-encrypted via Internet (no VPN required) to the core server of the central installation.

CREATE CUSTOMIZED 'PRTG MAPS'



Using PRTG's built-in drag & drop maps editor the display of monitoring status, graphs, and tables becomes even more clear.

'THREE CLICK' ASSISTANT

Selecting and adding of new sensors made easy.

“... really great (straight, stable, small footprint, etc.), exactly what we may expect from German quality products.”

Thad Seth Paul, Sensas SA

Technical Data

BASIC FEATURES

- Agentless monitoring of bandwidth, usage, activity, uptime, and SLA monitoring
- Suitable for networks of all sizes
- Automatic network discovery and sensor configuration (IPv4 and IPv6)
- Monitoring of multiple networks/locations with one license
- Failover cluster included in every license, multiple cluster nodes possible
- HTTP-based API for interfacing with other applications
- Customizing of the web interface using CSS, JavaScript and custom HTML code

SENSORS AND PROTOCOLS

- More than 190 sensor types (Ping, HTTP, WMI, SMTP, POP3, DNS, and many others)
- Network traffic and behavior analysis using SNMP, NetFlow v5/v9, sFlow v5, jFlow v5, packet sniffing
- Smart sensors (e.g. automatic cognition of multiprocessor systems)
- Preconfigured device templates for Cisco routers, SQL servers, virtual systems, etc.
- Dedicated hardware sensors for Dell, HP, NetApp, and APC devices
- Sensors for monitoring virtualized environments (VMware, HyperV, Virtuozzo, XenServer, Amazon CloudWatch, etc.)
- Three-click dialog to add sensors
- Programmable triggers and custom sensors
- Native and agentless Linux and Mac OS monitoring
- New heuristic calculation detects correlations between sensors

DISPLAY

- Elegant, fast, and powerful web-based interface as single page application
- Geo maps integration via MapQuest, CloudMade, Google, etc.
- Customizable tree view display and individual libraries
- Enterprise Console for viewing multiple PRTG installations at a glance
- iOS App, Android App, and Mobile Web GUI for flexible monitoring
- Hierarchical view (probes, groups, devices, sensors, channels)
- List of sensors (alphabetical, top-10 by speed, by tag, by type, etc.)
- Appealing graphs showing the monitoring data of specified periods from hours up to years
- Customizable 'PRTG Maps' that bring together monitoring status, graphs, and tables, using personalized layouts

ALERTING AND REPORTING

- Alerts according to individually configured criteria
- Various means of notification (email, SMS, pager message, HTTP request, execute script, syslog, etc.)
- Periodic and customizable reports (HTML, PDF)
- Detailed log files about all activity and results

SYSTEM REQUIREMENTS AND DATA STORAGE

- Data is stored in powerful monitoring data storage system (no SQL server required)
- Small download, easy to install, automatic software update
- Runs on Windows Server 2003, 2008 and 2012, XP, Vista, Windows 7 and Windows 8

LICENSING

- All features included in every license, no add-ons
- Easy upgrade to higher licenses by only paying the price difference

YOUR LOCAL CONTACT:

e-Systems Προηγμένα Συστήματα Πληροφορικής ΕΠΕ
Αλκυόνης 41, 17562 Π. Φάληρο

Τηλ: 210-569-9898

Φαξ: 210-569-9897

Email: info@e-systems.gr - Web: www.e-systems.gr

FREE 30 DAY TRIAL!

<https://shop.paessler.com/trial/prtg/989945>

338241/PF/20131111/EN/L

All rights for trademarks and names are property of their respective owners.

www.paessler.com – info@paessler.com

 **PAESSLER**
the network monitoring company

**“... THE COOLEST SOFTWARE I HAVE EVER USED!!
It does everything! So much better than our previous system.”**

Marc Gulatto, Network & IS Administrator, Cornerstone Credit Union