

GCS

Connector for Exchange 2000

GCS Connector for Exchange 2000 is one of GlobalComServer's e-mail environments.

By implementing a fax and/or SMS service into your e-mail system, you can improve information exchange not only within your business, but also with outside partners.

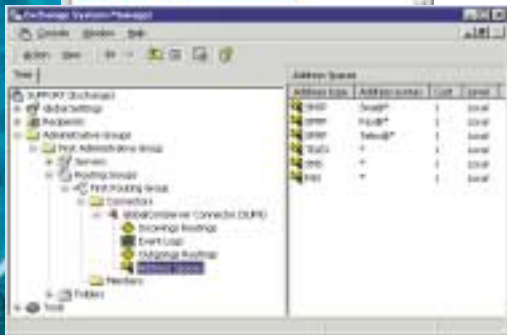
fax server 32
GLOBALCOMSERVER

SMS server 32
GLOBALCOMSERVER

You'll have all the advantages of email for your faxes and SMS messages. Just look at what you can do...

- ▶ Send a fax or SMS message the same way you send e-mail
- ▶ Store your Outlook directories
- ▶ Process message transmissions and receptions automatically
- ▶ Take advantage of Least Cost Routing (messages sent at the least cost) through the Internet, Intranet, Extranet, etc.
- ▶ Attach documents in their original format (Office, SmartSuite, HTML, Adobe, PCL5E, Postscript and over 200 others)
- ▶ Choose your own cover page and sending times
- ▶ Your transmission and reception acknowledgments are available automatically
- ▶ Remote management module
- ▶ Routing of incoming faxes by DID, line, OCR, etc.
- ▶ No software installation needed on the client computer
- ▶ Integrated in the Microsoft Exchange Server directory

Outlook Client ▼



▲ Active Directory Integration

Full integration in Active Directory

- ▶ Users management through "Active Directory"
- ▶ Native Windows 2000 security – "Active Directory"
- ▶ Centralized administration – "Active Directory"
- ▶ Also available for Exchange Server 5.0 and 5.5



Microsoft
GOLD CERTIFIED
Partner

AVM
INFORMATIQUE

▶ AVM informatique
52, rue de St Genis Laval - 69540 Irigny - France
Tél. (33) 4 78 56 59 13 - Fax (33) 4 72 39 91 69
<http://www.avm-informatique.com>
e-mail: gcs@avm-informatique.com