



GLOBALCOMSERVER PLATFORM COMPONENTS

**© OCTOBER 2002 AVM INFORMATIQUE
(UPDATED: AUGUST 22, 2006)**

LICENSE

Information in this document is subject to change without notice.

This document cannot be reproduced in any ways without AVM Informatique written authorization.

GlobalComServer is an AVM Informatique product.

GlobalComServer is protected by copyrights.

All products mentioned in this manual are trademarks of their respective owners.

TABLE OF CONTENTS

Check our web site for updates:

<http://www.avm-informatique.com/>

LICENSE	2
TABLE OF CONTENTS	3
USING THE MANUALS	5
Navigating through the documents	5
Page visibility	5
Printing the manual	6
TO CONTACT AVM	7

Click on a product to read its manual.

Setup	GCS platform setup administrator's guide
GlobalComServer platform	GCS platform guide administrator's guide
Lotus Notes gateway (administrator)	Lotus / Domino gateway administrator's guide
Lotus Notes gateway (user)	Lotus Notes gateway user's guide
Exchange 2000 GCS Connector (administrator)	Exchange 2000 gateway administrator's guide
Exchange 5.5 GCS Connector (administrator)	Exchange 5.5 gateway administrator's guide
Exchange GCS Connector 5.5 (user)	Exchange 5.5 GCS gateway user's guide
Exchange GCS Connector 2000-2003 (user)	Exchange 2000-2003 GCS gateway user's guide
SMTP gateway (administrator)	SMTP gateway administrator's guide
SMTP gateway (user)	SMTP gateway user's guide

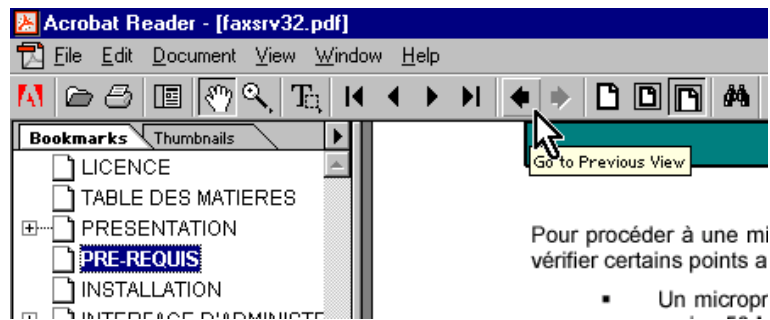
HP 9100C Digital Sender gateway	HP Digital Sender interface administrator's guide
SpoolFax for HP3000	HP3000 interface administrator's guide
SpoolFax for NT	spool interface administrator's guide
Graphic Fax for R/3 (4.6) SAPconnect	SAP 4.6 gateway administrator's guide
Graphic Fax for R/3 (4.x) SAPconnect	SAP 4.0 – 4.5 gateway administrator's guide
Graphic Fax for R/3 (3.1) SAPconnect	SAP 3.1 gateway administrator's guide
Graphic Fax for R/3 SAPcomm	SAP gateway administrator's guide
GCS Archive Server	archive your messages administrator's guide
GCS Archive client	browse your archive (queries...) user's guide
WEB client (administrator)	WEB client interface administrator's guide
WEB client (user)	WEB client interface user's guide
Windows client	Windows client administrator's guide
Cluster	cluster software administrator's guide

USING THE MANUALS

Navigating through the documents

Click on a bookmark to navigate quickly in the document.

If you click on an inter-document link in one of the manual, your current manual will be closed and the desired one opened.

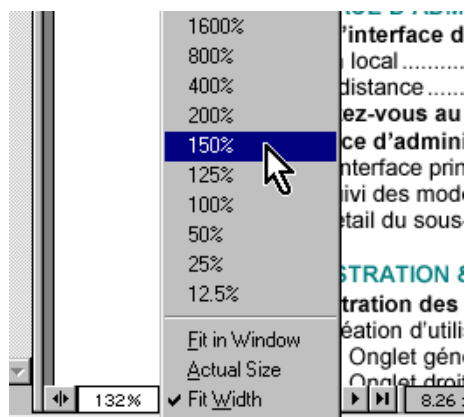
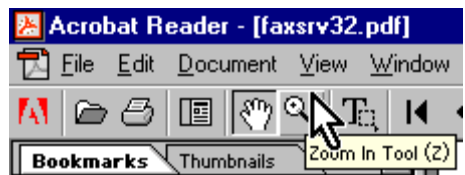


To go back to the previous manual use the **Previous view** button (cousin of the Internet browsers **Back** button).

Use this button to go back quickly to a previous page as well.

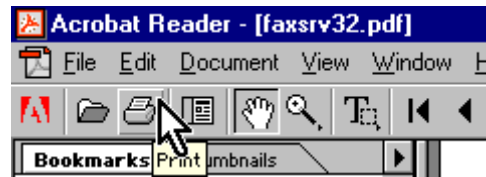
Page visibility

You can zoom in the document.
Use the **zoom** tool in the menu.

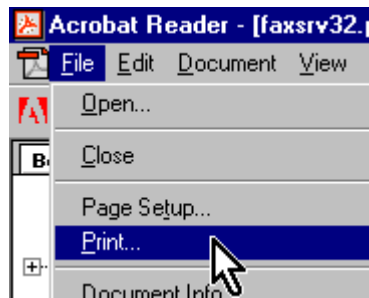


Printing the manual

You can print the manuals when reading them with **Acrobat Reader®**.



if you use the menu **File | Print** you will be able to precise which page(s) you want (for example, to print only the user's guide of a manual).



TO CONTACT AVM

<http://www.avm-informatique.com>

AVM Informatique
52 rue de Saint Genis Laval
69540 IRIGNY
FRANCE

Business hours (GMT +1) : 09 :00 – 12 :00
14 :00 – 18 :00

Phone +33 (0) 4 78 56 59 13
Fax +33 (0) 4 72 39 91 69

Sales Director (France)
Florent Garel
florent.garel@avm-informatique.com

Sales Director (Export)
Michel Garel
michel.garel@avm-informatique.com

Technical Director
Frédéric Chiesi
frederic.chiesi@avm-informatique.com

Sales Assistant
Gisèle Achin
gisele.achin@avm-informatique.com

Financial
Vicky Muguet
vicky.muguet@avm-informatique.com

Technical Support
support@avm-informatique.com