



# **GCS WEB CLIENT - INSTALLATION GUIDE**

---

**© APRIL 2001 AVM INFORMATIQUE  
(UPDATED: AUGUST 22, 2006)**

## LICENSE

Information in this document is subject to change without notice.

This document cannot be reproduced in any ways without AVM Informatique written authorization.

**GCS Web Client** is an AVM Informatique product.

**GCS Web Client** is protected by copyrights.

© 1999 - 2000 AVM Informatique.

All rights reserved.

All products mentioned in this manual are trademarks of their respective owners.

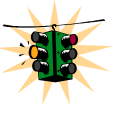
# TABLE OF CONTENTS

## GCS Web Client Installation guide

Check our web site for updates  
<http://www.avm-informatique.com>

<b>LICENSE</b> .....	<b>2</b>
<b>TABLE OF CONTENTS</b> .....	<b>3</b>
<b>PRESENTATION</b> .....	<b>4</b>
<b>GCS web client presentation</b> .....	<b>4</b>
<b>GCS web client architecture</b> .....	<b>4</b>
<b>PRE-REQUIREMENTS</b> .....	<b>5</b>
<b>Internet Information Services (IIS)</b> .....	<b>5</b>
<b>Declaring GCS users</b> .....	<b>5</b>
<b>INSTALLATION</b> .....	<b>6</b>
<b>On the Internet Information Server machine</b> .....	<b>6</b>
<b>Components created in Internet Information Server (IIS)</b> .....	<b>9</b>
FTP site .....	9
HTTP Application.....	9
Virtual Directory .....	10
COM/DCOM component .....	10

# PRESENTATION

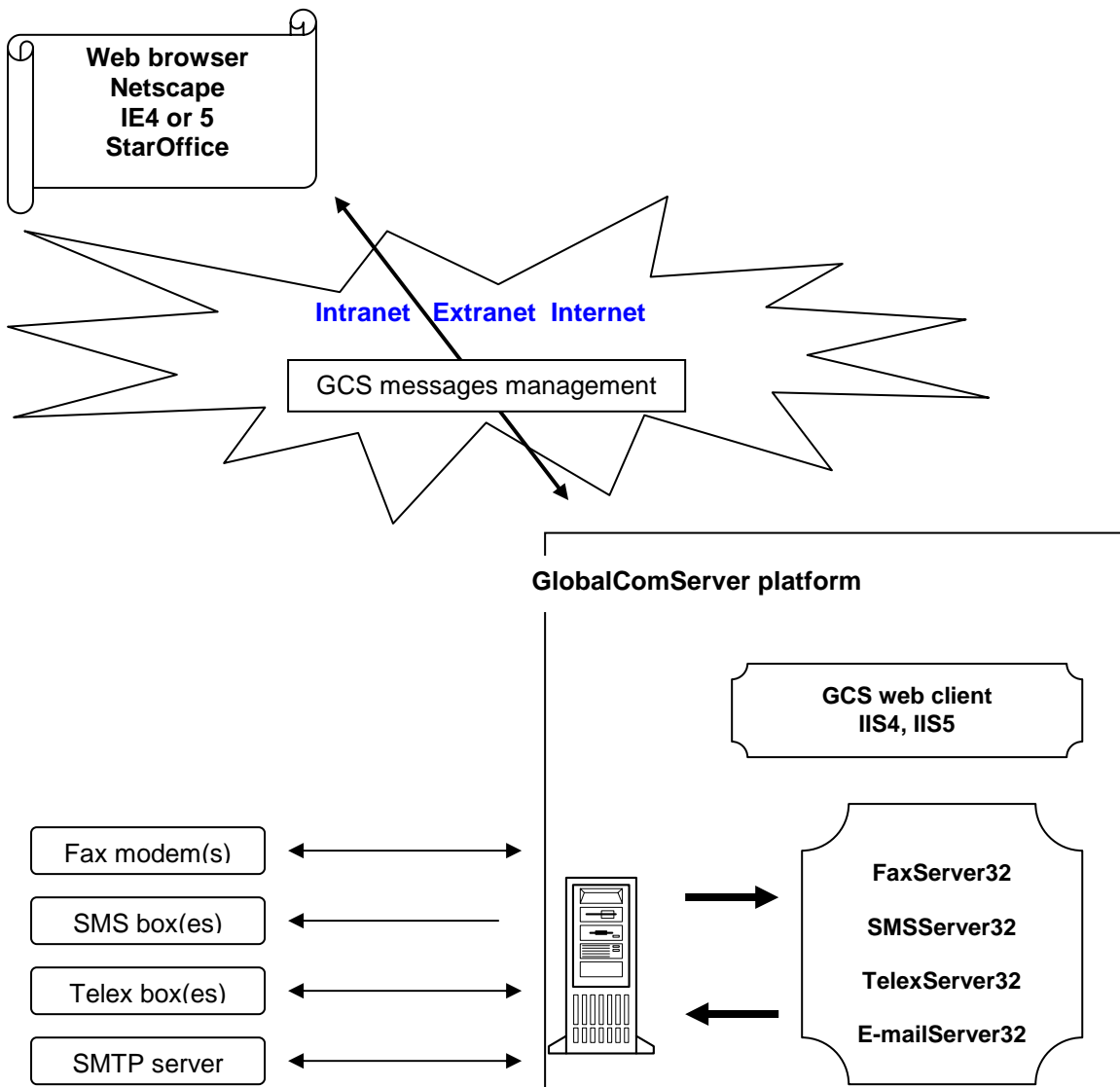


This manual is designated to the system administrator responsible for installation, configuration and maintenance of the **GCS web client**. Knowledge of Microsoft Windows NT® and Microsoft Internet Information Server® is recommended.

## GCS web client presentation

The **GCS web client**, developed by AVM Informatique, allows users to send **GCS** messages (fax, e-mail, telex, SMS) from the intranet / extranet / Internet. Attached documents may be sent through this product as well. Those documents will be processed and sent by fax / telex / SMS / e-mail by **GlobalComServer**.

## GCS web client architecture



---

---

## PRE-REQUIREMENTS

---

**We will assume that one GlobalComServer platform is present on your network.**

---

### Internet Information Services (IIS)

Internet Information Server 4 (Option Pack 4) or Internet Information Server 5 (Windows 2000) must be installed and running during the installation. It is recommended to use the same machine of GlobalComServer to prevent from setting access rights between two machines.

### Declaring GCS users

In order to use the GCS web client, users must be declared in the **GlobalComServer** administration.

(See [GlobalComServer manual – Users / Groups](#))

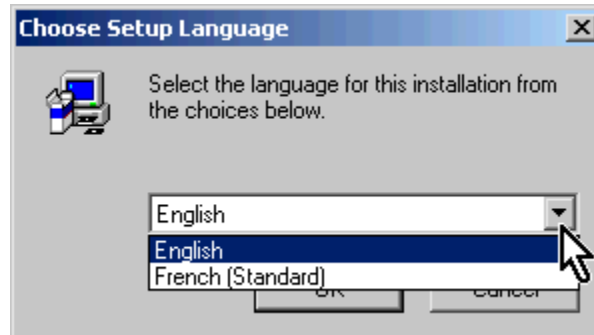
## INSTALLATION

You should be logged as a local administrator to perform the **GCS web client** installation.

### On the Internet Information Server machine

Run the **Setup.exe** corresponding to the GCS Web Client setup program

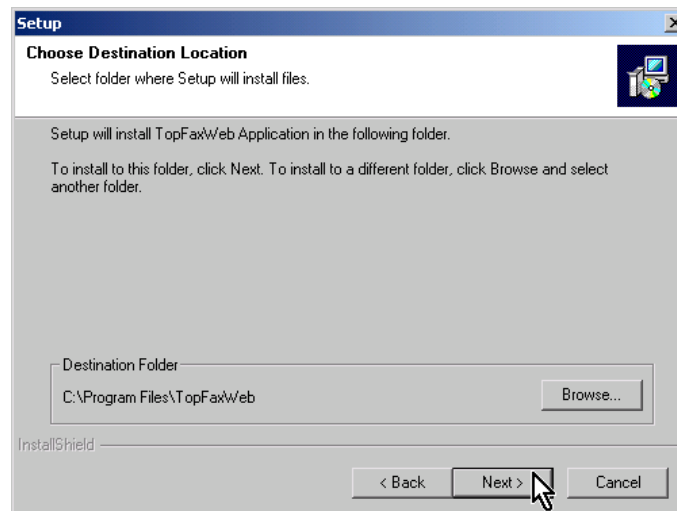
Select your preferred language



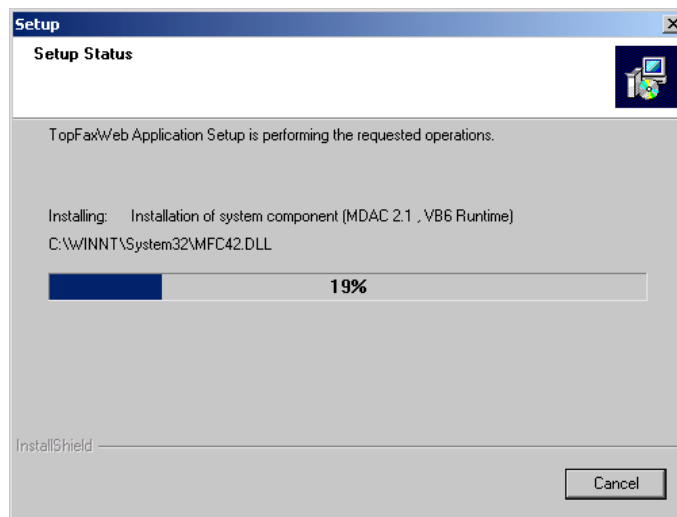
Click **Next** to bypass the **Welcome screen**

Read the **License Agreement** then click **Yes** to bypass the **License agreement screen**

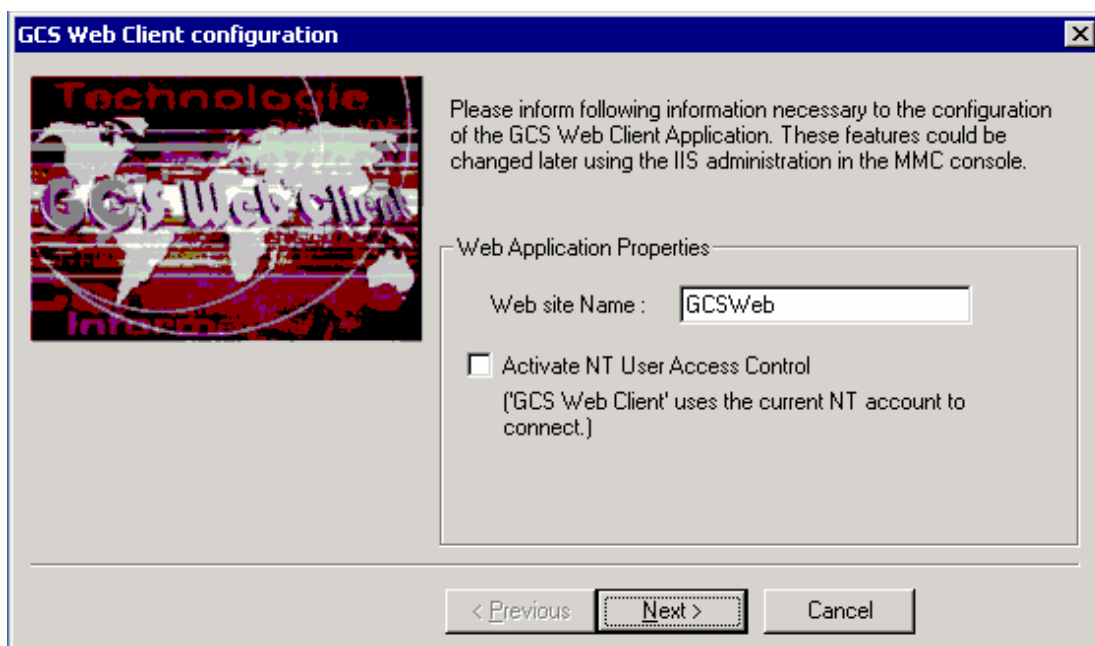
Accept the default installation path or select another one



Click **Next** to confirm and start installation.



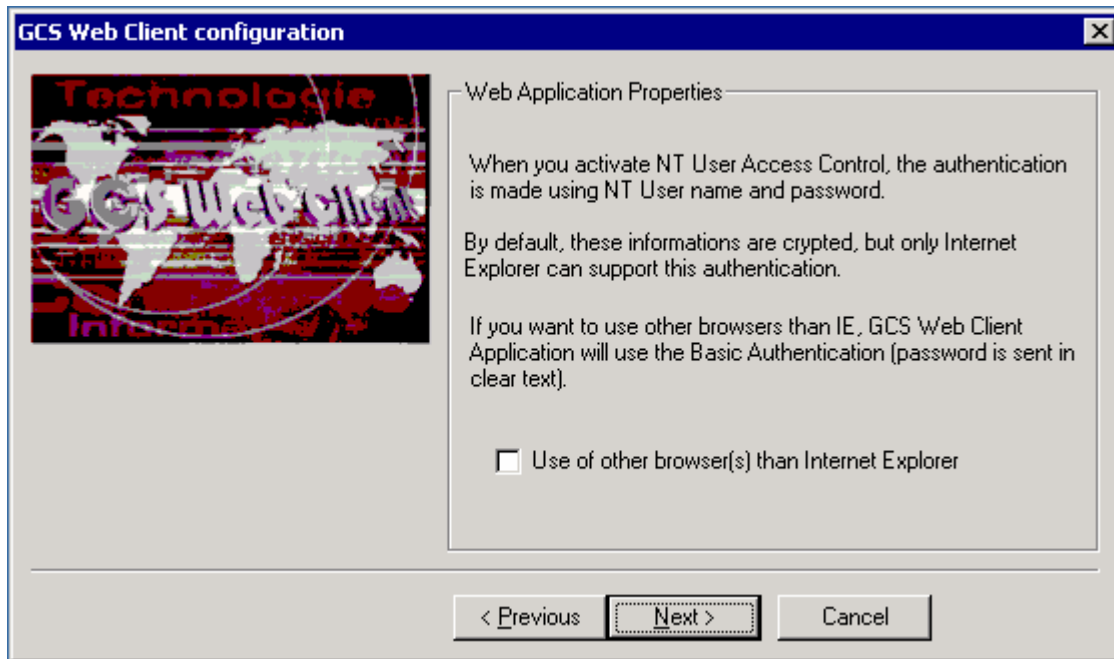
When files are copied, you must configure Web application:



- Give a name to your application, it will be use to define the application URL (eg: [http://HTTP\\_SERVER/GCSWeb](http://HTTP_SERVER/GCSWeb) )
- Deactivate/Activate the NT user access control
- **Deactivate ( default )** : Any person connecting itself to the application, uses a personal account GCS which it must be declared in the **GlobalComServer** administration. With regard to the databases access, an anonymous account is used for everyone.
- **Activate** : Any person connecting itself to the application uses a GCS account which it must be declared in the **GlobalComServer** administration. The user does not have has to fill in the GCS account because it is fill in automatically by using current account NT.

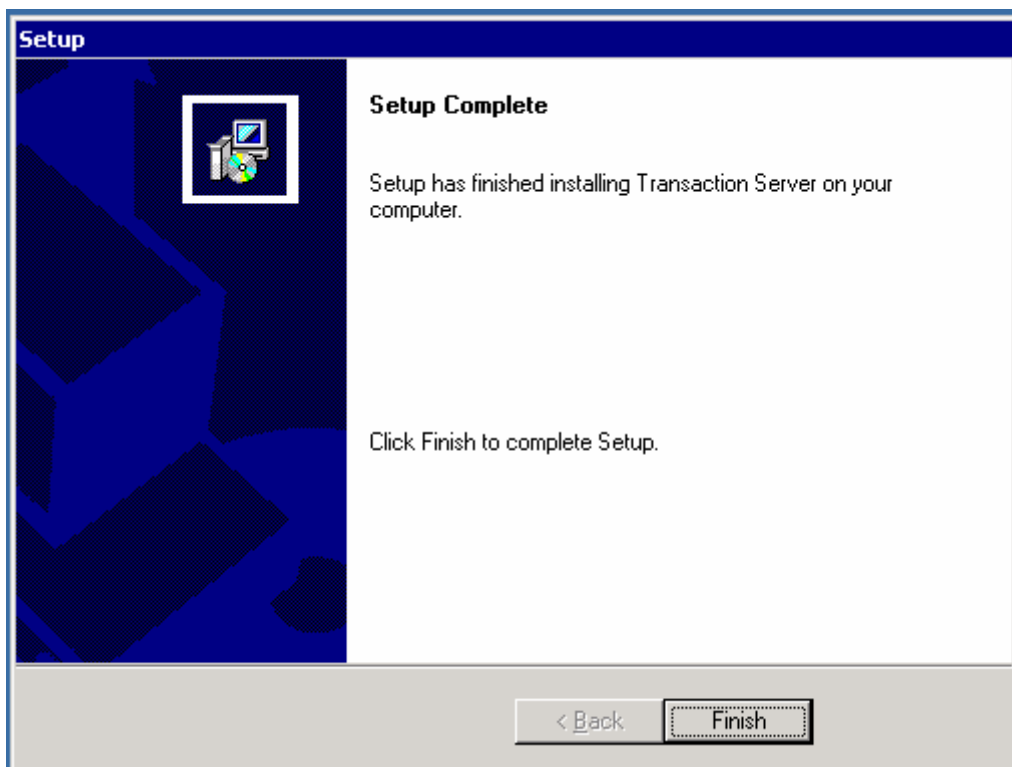
Click on **Next**

- If the NT user access control is active, an other window appears to know which browser type will be used for GCS Web Client.



**Remarque:** NT user access control use an authentication only supported by Internet Explorer. For other(s) browser(s), you must use basic authentication. Basic authentication results in the transmission of passwords across the network in an unencrypted form. A determined computer vandal equipped with a network monitoring tool could intercept user names and passwords.

Click **Finish** to exit the setup





## Components created in Internet Information Server (IIS)

Run the IIS administration like the following:

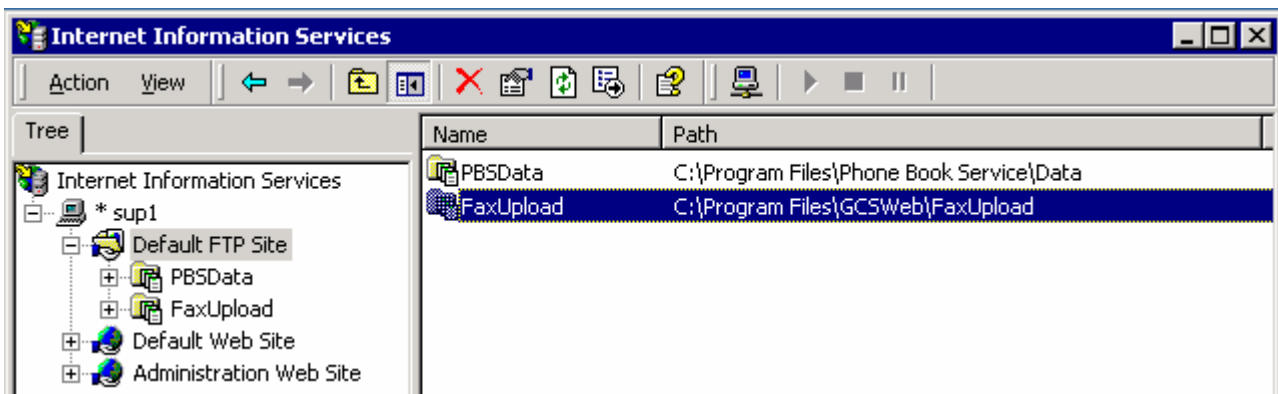
**Windows NT 4.0** : Start/Programs/Windows NT 4.0 Options Pack/Microsoft Internet Information Server/Internet Services Manager

**Windows 2000** : Start/Programs/Administrative Tools/ Internet Services Manager

The installation create various elements in the tree structure of Internet Server Information:

- 1 FTP site
- 1 HTTP application
- 1 Virtual directory
- 1 COM/DCOM component - "Out Of Process"

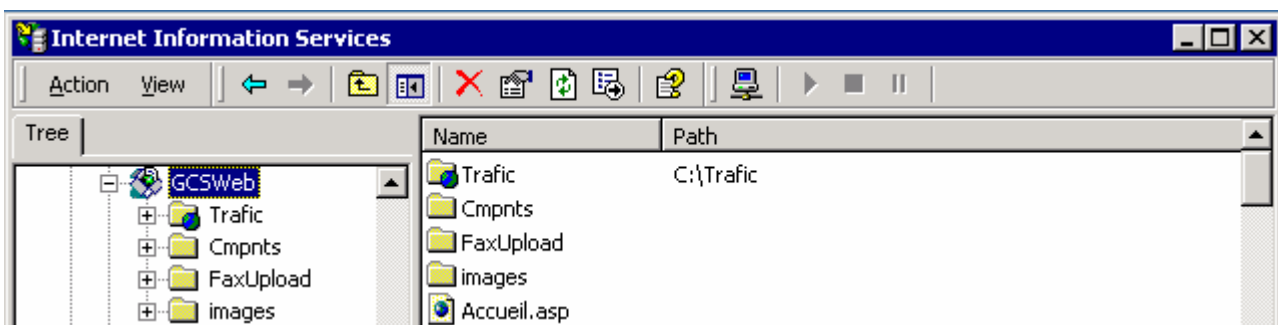
### FTP site



This directory must be accessible in **Read / Write** access for all users of **GCS Web Client**.

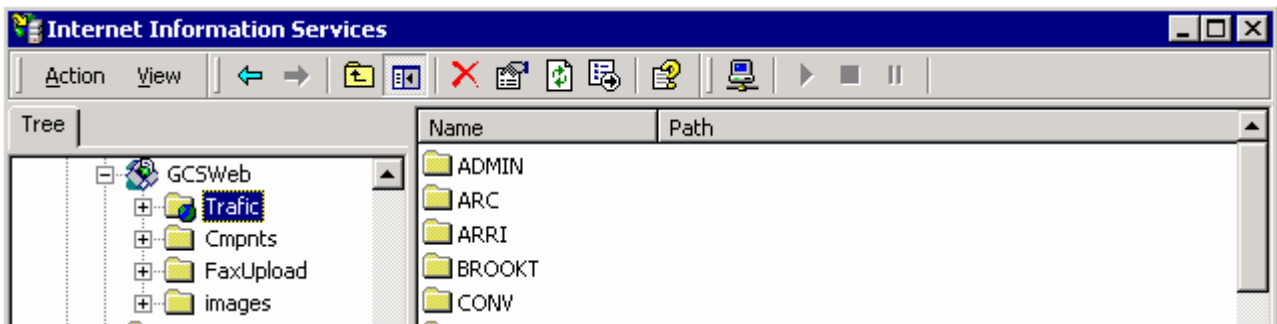
This directory is useful when using the **GSWeb printer**, which can be installed on each client stations in order to be able to join documents during the composition of one message using **GCS Client Web**.

### HTTP Application



The HTTP application is the main entrance point of GCS Client Web. Application properties are accessible by clicking on 'Actions/Properties'. ' **Directory Security** ' tab is useful to change the access security defined during the installation.

## Virtual Directory



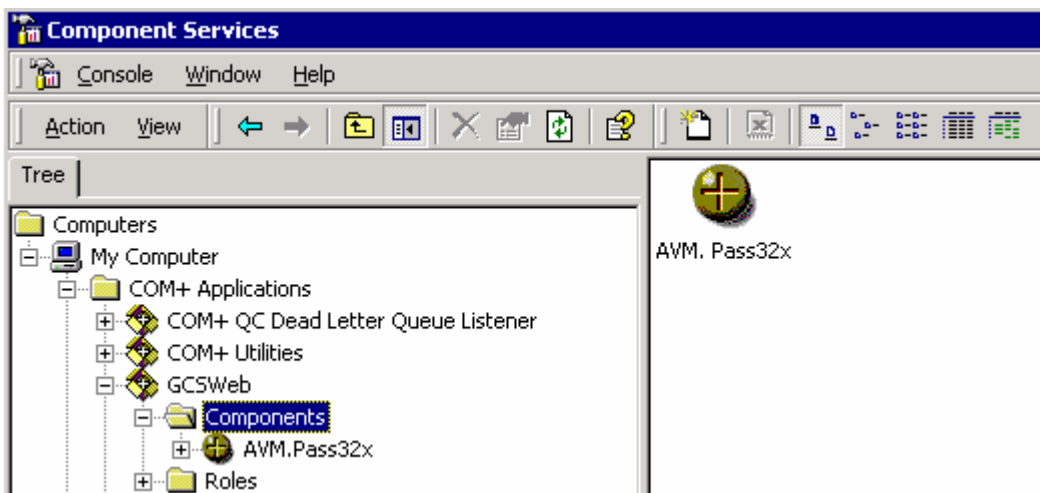
This directory gives access to the images documents. Read access is sufficient for this directory.

## COM/DCOM component

Run the Component administration like the following:

**Windows NT 4.0** : Start/Programs/Windows NT 4.0 Options Pack/Microsoft Internet Information Server/Internet Services Manager

**Windows 2000** : Start/Programs/Administrative Tools/ Component Services



This component allows the dialogue between IIS (Internet Information Server) and GlobalComServer. It uses the services account defined during the installation. When the component is active, the icon is moving.

