



# GLOBALCOMSERVER HP 9100C DIGITAL SENDER GATEWAY ADMINISTRATOR'S GUIDE

---

© 1998 AVM INFORMATIQUE  
(UPDATED: AUGUST 22, 2006)

## LICENSE

Information in this document is subject to change without notice.

This document cannot be reproduced in any ways without AVM Informatique written authorization.

**GCS HP9100C Digital Sender gateway** is an AVM Informatique product.

**GCS HP9100C Digital Sender gateway** is protected by copyrights.

© 1999 - 2000 AVM Informatique.

All rights reserved.

All products mentioned in this manual are trademarks of their respective owners.

## TABLE OF CONTENTS

### GCS HP 9100C Digital Sender gateway Administrator's guide

Check our web site for updates  
<http://www.avm-informatique.com>

<b>LICENSE</b> .....	<b>2</b>
<b>TABLE OF CONTENTS</b> .....	<b>3</b>
<b>PRESENTATION</b> .....	<b>4</b>
<b>PRE-REQUIREMENTS</b> .....	<b>5</b>
<b>INSTALLATION</b> .....	<b>6</b>
<b>GCS HP9100C Digital Sender gateway</b> .....	<b>6</b>
How to parameter ScanFs32.....	6
<b>Installing the HP 9100C Digital Sender software on the GCS platform</b> .....	<b>7</b>
<b>Configuration with HP JetAdmin</b> .....	<b>10</b>
<b>HOW WORKS SCANFS32.EXE</b> .....	<b>12</b>
<b>Declaring users</b> .....	<b>12</b>
<b>Follow up</b> .....	<b>12</b>
<b>TROUBLESHOOTING</b> .....	<b>13</b>
<b>User license problem</b> .....	<b>13</b>

## PRESENTATION

**GCS HP9100C Digital Sender gateway** allows you to send automatically faxes coming from a HP 9100C Digital Sender (fax function).

## PRE-REQUIREMENTS

Your network has at least:

- One HP 9100C Digital Sender
- One **GlobalComServer platform** (AVM Informatique product)

## INSTALLATION

### GCS HP9100C Digital Sender gateway

ScanFs32.exe is an AVM Informatique program.

Create a folder named **HpfScan** in **..\Trafic**.  
Copy **Scanfs32.exe** in the folder **..\Trafic\System32**.  
Go to **..\Trafic\System32** and launch **Scanfs32.exe**.

You can also start **Scanfs32.exe** from an MS-DOS window (from the folder **..\Trafic\System32**) by typing the following command:

**ScanFs32 -install**

#### How to parameter ScanFs32

To view and adapt the new service configuration, go to **control panel → Services**.  
You can modify its startup type (manual by default) and its account (system account by default).

To uninstall that service, stop it and from an MS-DOS window (**..\Trafic\System32**) type:

**ScanFs32 -remove**

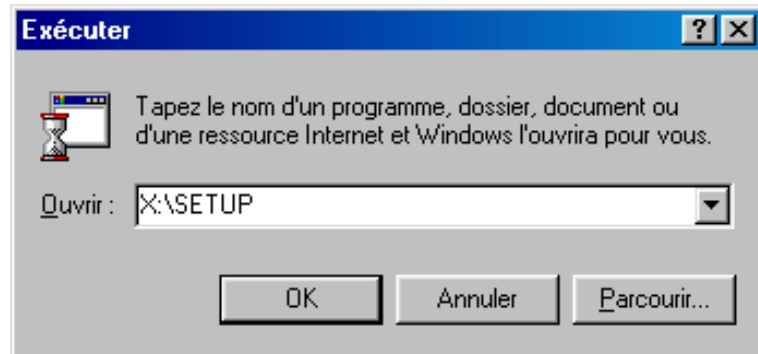
## Installing the HP 9100C Digital Sender software on the GCS platform

Insert the Digital Sender CD-rom in your CD-ROM player.

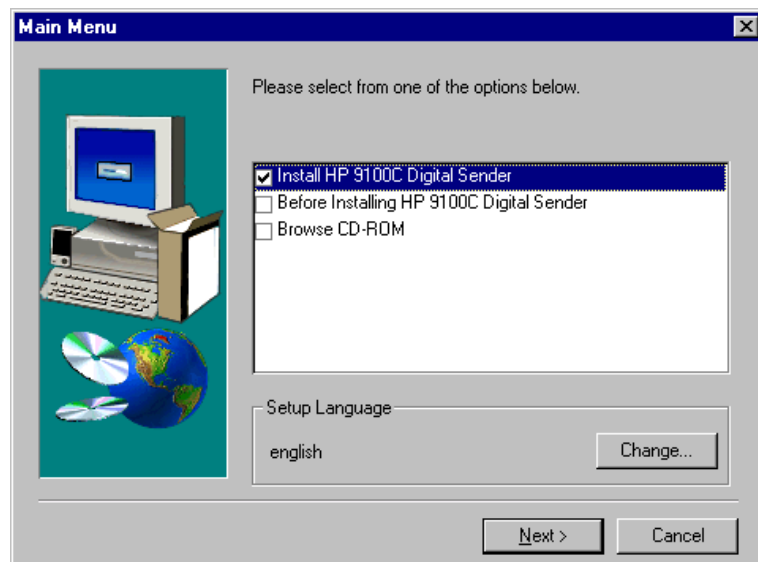
If **Automatic insertion notification** CD-ROM property is active, setup will start automatically. Otherwise, open the **Run** window (**Taskbar → Start → Run**) and write the following command:

### X:\SETUP

Replace **X** with the letter of your CD player.

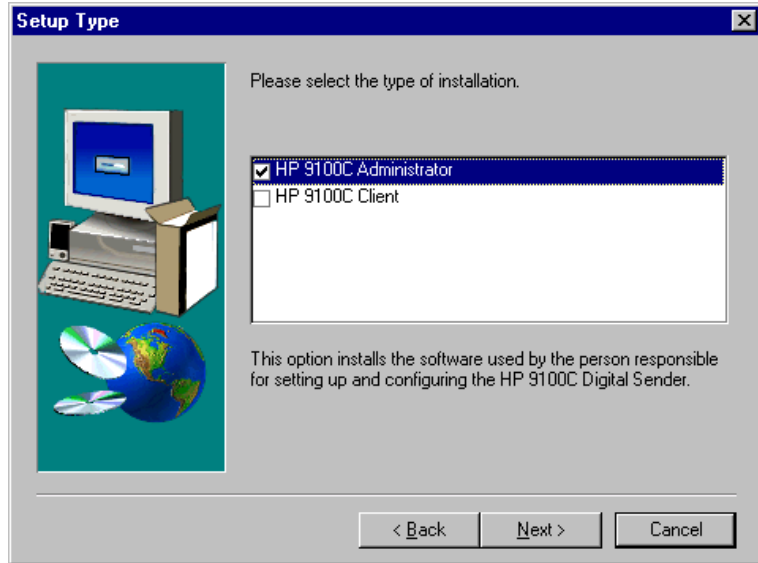


Push **Enter** or click **OK**.

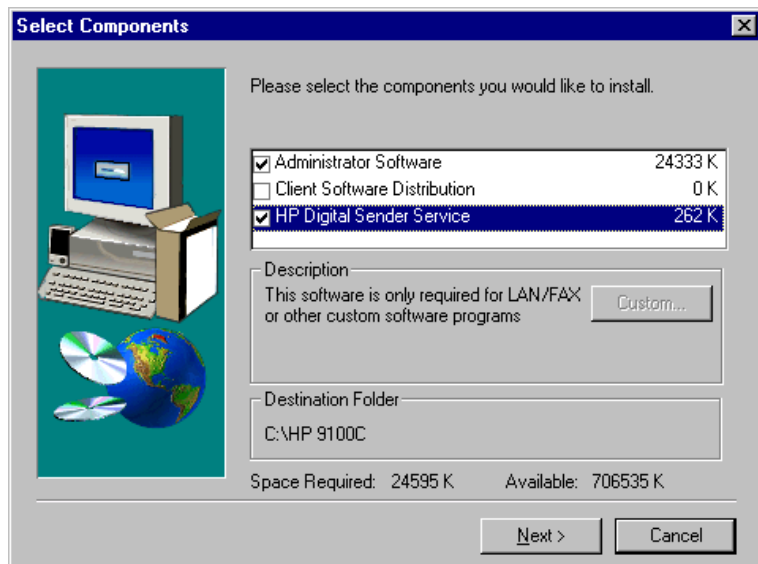


Click **Next**.

Choose **HP 9100C Administrator**.



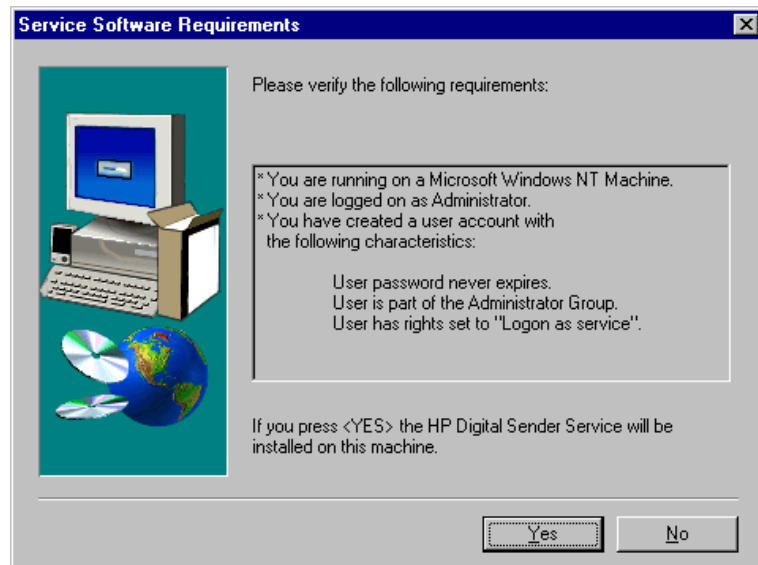
You have to select **HP Digital Sender Service** and **Administrator software**.  
Change the installation folder if you wish.



Click **Next**.

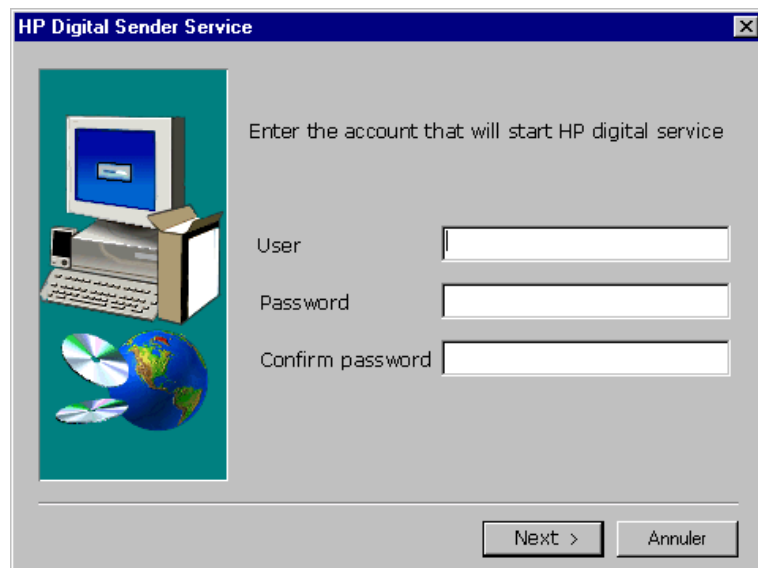


Before installing the Digital Sender NT service, the program sums up the pre-requirements allowing the service to run properly.



Click **Yes** to install the service.

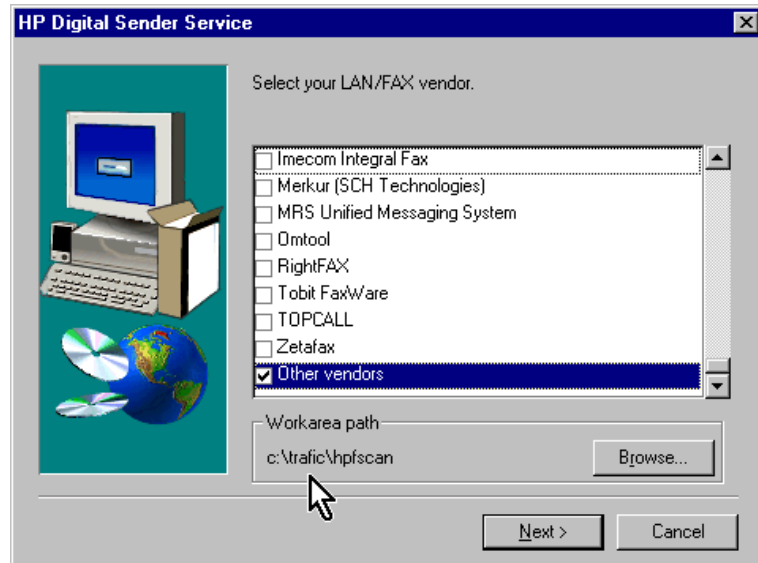
Use the account starting the **AVM – GlobalComServer** service.



Click **Next**.

Accept to add the fax service.

Check **Other vendors** at the end of the list.



Click **Browse** to select the folder `..\Traffic\hpfscan`.


Click **Next**, the installation is over.

---

**You need to reboot your machine.**

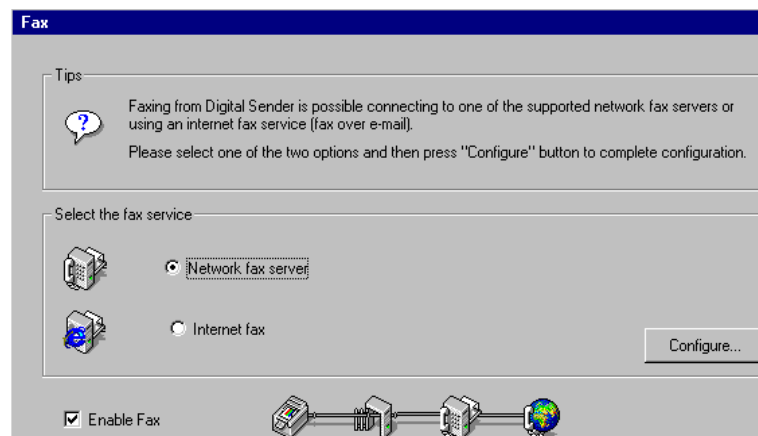
---

### Configuration with HP JetAdmin

Start  HP JetAdmin from **Start** → **programs** → **HP jetadmin utilities**.

Click on **Device** → **Modify** (if you have several HP9100C, choose the correct one first).

Click 6 times **OK** and **Next** to reach the following screen



Click **Configure**

Type the GCS platform IP address

On the same screen (at the bottom of the window) click **Advanced...**

Select **PCL5 uncompressed** as file format

Click **OK** twice.

Pass the following screen to finish the modification.

## HOW WORKS SCANFS32.EXE

The program examine periodically the folder `..\Traffic\Hpfscan` looking for .hpf files.

Those files are created when a fax is sent from the Digital Sender.

They contain the following parameters:

- ##dial                      fax number
- ##billback                recipient's name
- ##UserName                sender's name
- ##Filename                associated file

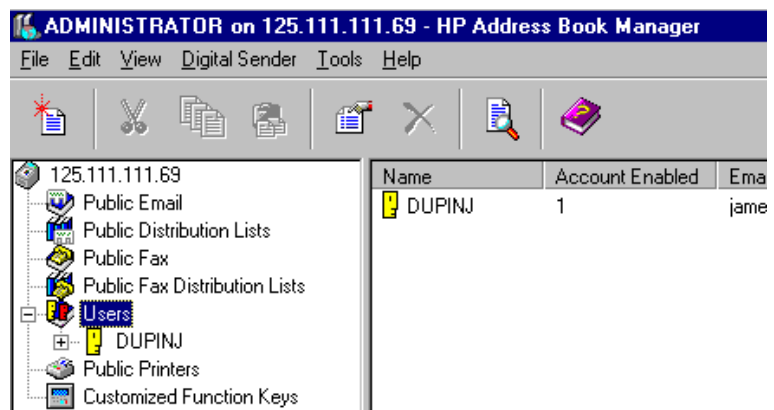
The files are deleted afterwards.

For every .hpf file, an H file is created in the folder `..\Traffic\Dep` to be processed by **GlobalComServer**.

The associated file is also created in `..\Traffic\Dep` and its name begins with P except if the original data file is a .tif file (in that case the first letter is T).

### Declaring users

In order to use AVM logbook the **HP address book manager** account names must be identical to the full name declared in the **GlobalComServer** administration.



In the **GlobalComServer** administration:



### Follow up

**GCSWin** logbook allows the user to keep an eye on their GCS messages.

## TROUBLESHOOTING

### User license problem

This happens when your **AVM GlobalComServer** license has a limited number of users. The **GCS platform** rejects one or more GCS messages (license problem – user unknown).

Also, if **Scanfs32** does not find a **GlobalComServer** account corresponding to the account used from the HP9100C then the program assigns a default username to the fax.

That name is `[]HpScanFs32[]!` `[]` shows a blank

Create a user account in the fax server.

Once it is created rename the full name of this user  
`[]HpScanFs32[]!` // blank HpScanFs32 blank !

Blanks and capitals are important.