



# **GLOBALCOMSERVER MS-EXCHANGE 5.X CONNECTOR ADMINISTRATOR'S GUIDE**

---

**© OCTOBER 2002 AVM INFORMATIQUE  
(UPDATED: AUGUST 22, 2006)**

## LICENSE

Information in this document is subject to change without notice.

This document cannot be reproduced in any ways without AVM Informatique written authorization.

**GlobalComServer** is an AVM Informatique product.

**GlobalComServer** is protected by copyrights.

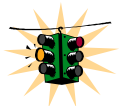
All products mentioned in this manual are trademarks of their respective owners.

# TABLE OF CONTENTS

Check our web site for updates:  
<http://www.avm-informatique.com/>

- LICENSE..... 2**
- TABLE OF CONTENTS ..... 3**
- PRESENTATION ..... 4**
- GCS MS-Exchange® 5.x Connector presentation ..... 4**
- GCS MS-Exchange® 5.x Connector architecture ..... 4**
- PRE-REQUIREMENTS ..... 5**
- INSTALLATION..... 6**
- On the MS-Exchange® Server 5.x machine ..... 6**
  - Access Rights ..... 6
  - MS-Exchange® 5.x GCS Connector setup ..... 6
- User license ..... 8**
- GCS CONNECTOR CONFIGURATION ..... 9**
- On the MS-Exchange® 5.x machine..... 9**
  - Configuring the outgoing messages format..... 9
  - Configuring the outgoing Least Cost Routing..... 10
  - Configuring the incoming messages format ..... 10

# PRESENTATION

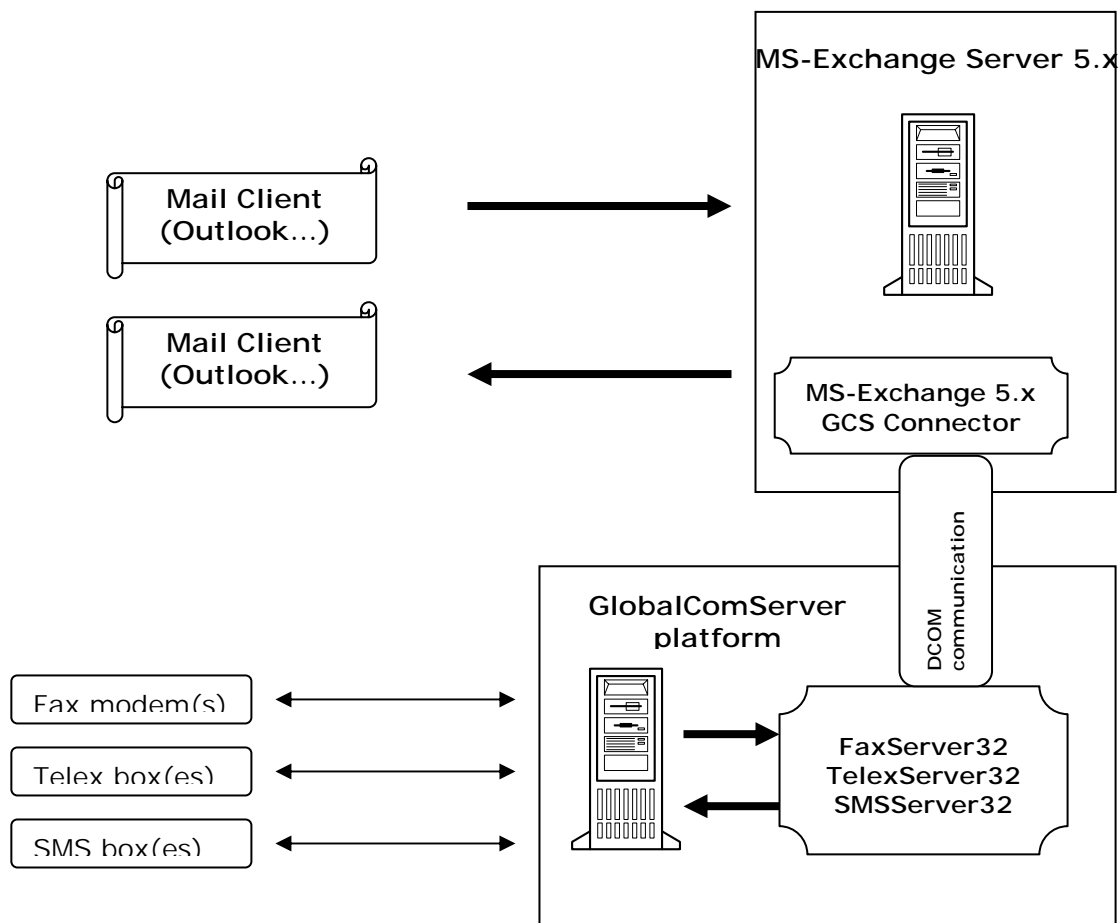


This manual is designated to the system administrator responsible for installation, configuration and maintenance of the **MS-Exchange® 5.x Connector**. Knowledge of Microsoft Windows NT® and MS-Exchange® Server 5.x® is recommended.

## GCS MS-Exchange® 5.x Connector presentation

The **GCS MS-Exchange® 5.x Connector**, developed by AVM Informatique, allows users to send and receive faxes, SMS and TELEX with an MS-Exchange® mail client (Outlook® 98, 2000 - or MS-Exchange® client) based on an MS-Exchange® Server 5.x. Using their mail client (Outlook® 98, 2000 - or MS-Exchange® client), users compose a message, to which one or several documents (Word, Excel...) may be attached, and send it. The **GCS MS-Exchange® 5.x Connector** processes that e-mail and puts source files in the **GlobalComServer Traffic** directory. The **GlobalComServer** platform processes those files and sends the message (Fax, SMS, Telex). Users may receive an acknowledgment in their inbox. (See [GlobalComServer manual - Administration | Users | Advanced tab](#)) Users can receive faxes in their inbox if the fax server has been configured to do it (See [GlobalComServer manual - Administration | Main configuration | Incoming routing](#))

## GCS MS-Exchange® 5.x Connector architecture



---

---

## PRE-REQUIREMENTS

---

An MS-Exchange® Server 5.x® must have been installed prior to the connector installation.

We will assume that one GlobalComServer platform is present on your network.

---

# INSTALLATION

## On the MS-Exchange® Server 5.x machine

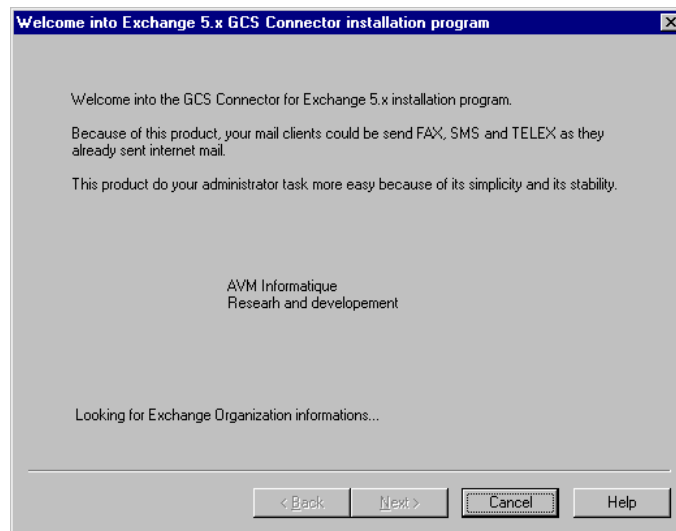
### Access Rights

Make sure you are logging on an administrator Exchange server account.

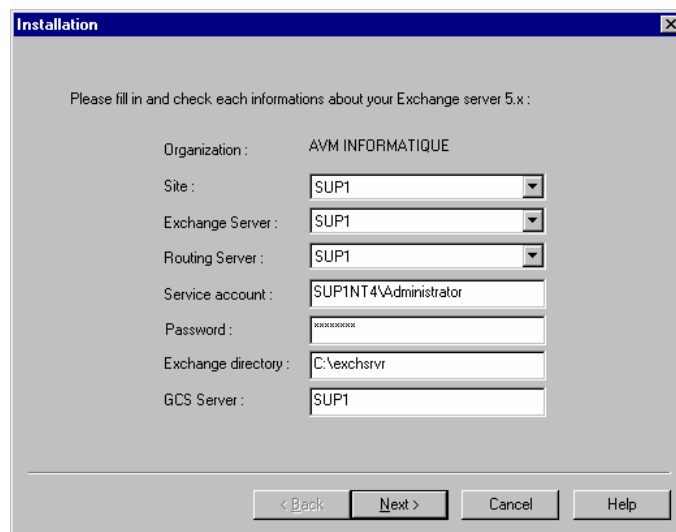
### MS-Exchange® 5.x GCS Connector setup

Insert the GCS Platform CD on the driver and click on the **Exchange 5.x Connector setup**.

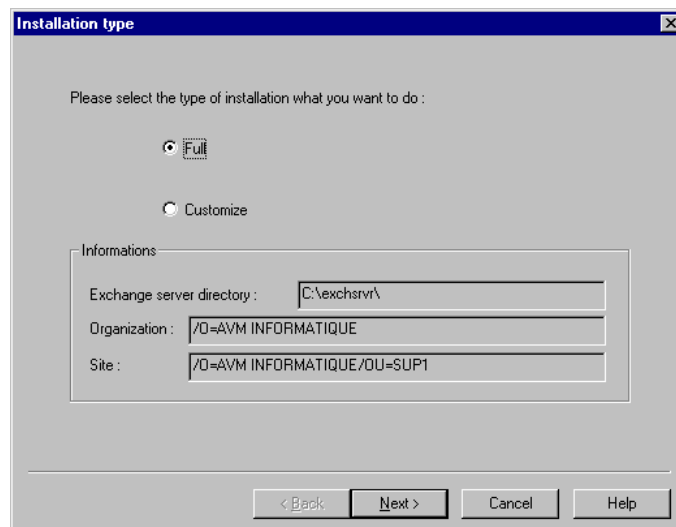
The processus look up for each Exchange server's properties. Click **Next**



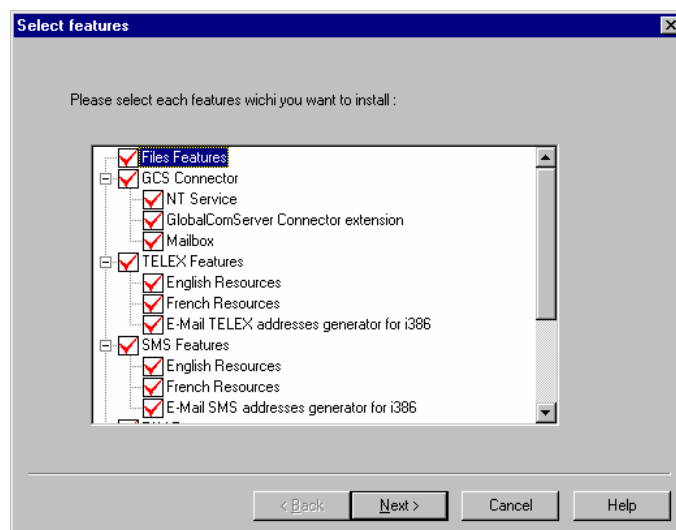
Fill in required informations and click **Next**



Select the type of installation and click **Next**

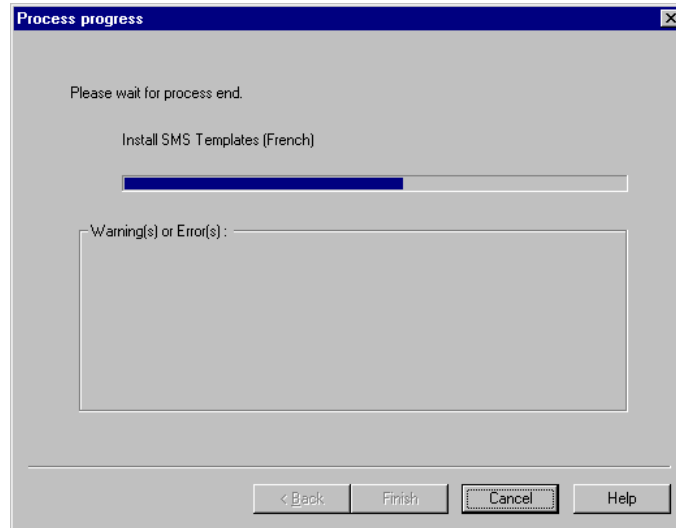


Even if you select a **customized installation** you may now select each feature you want to install.



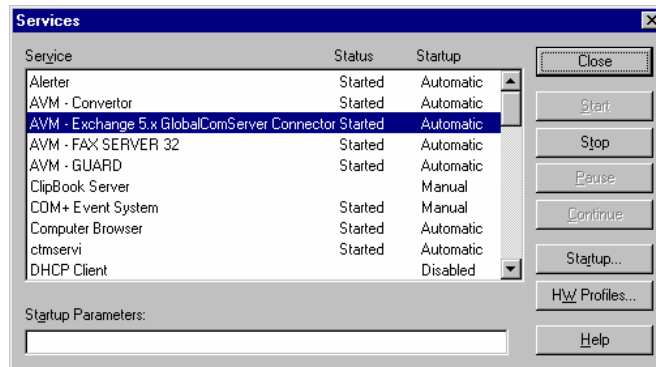
The program start its installation processus and may display some errors or warnings which occurred during the progress.

At the ending of the program click **Finish**.



The installation is over.

A new NT service called **AVM - Exchange Fax Connector** has been added and started



**User license**

You must have bought the license for the **Exchange GlobalComServer Connector** and the protection key on the **GCS platform** must have been updated.

(See [GlobalComServer manual – Troubleshooting | Protection key validation](#))

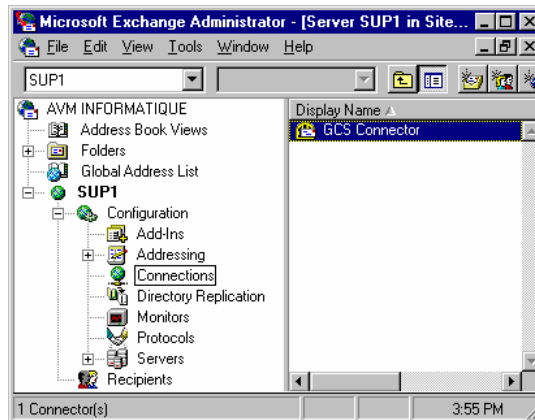


## GCS CONNECTOR CONFIGURATION

### On the MS-Exchange® 5.x machine

To configure the connector, you must open Exchange administrator interface and go to **connections** container into your **site** directory.

Now select **GCS Connector**, and display its properties.



### Configuring the outgoing messages format

Select **GCS Settings** tab.



**Keep message header** : When a message has been sent, the connector keep the header fields where the To and Cc recipients are displaying.

**Keep message RTF format** : When a message has been sent, its body is keeping as Rich Edit Format and the connector add this as the first attached file.

**Service event log** : With this view you can manage the NT service and view its events log.

### Configuring the outgoing Least Cost Routing

Select **GCS Outgoing Settings** tab.



On this view, you can specify the Least Cost Routing table which will use to choose the GCS server which will really send the message. Each new entry will be checked by the administrator program in order to see if you have the rights to connect to the GCS Server.

### Configuring the incoming messages format

Select **GCS Incoming Settings** tab.



**Spy the following GCS server** : If this option is checked, the connector will spy, each GCS server validated in the table, if one or more messages has been received. On a new incoming message, the connector will send a notification to the Exchange Client and its originator will be named with the GCS server name which has been received the message.